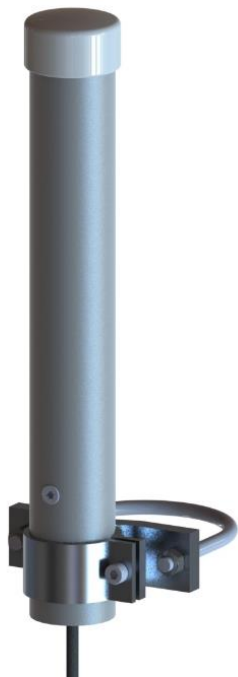


SmartTube

Wall or Pole Mounted Omni-directional Antenna



The SmartTube range has been developed as a cost effective and robust antenna, to provide TETRA UHF, ISM, LTE and WiFi antenna functions for IoT and M2M applications.

- Omni-directional
- A variety of tube length, up to 3 meters and adjustable mounting clamps allows easy installation.
- Single or multi-port combined antenna solutions.

Specifications

Electrical

SmartTube can be configured upon to customer demands, i.e. Single or multiple ports for a wide range antenna functionalities.

Type 1	ISM433/444 + 2G/3G/4G
--------	-----------------------

Type 2	ISM868/915/925 + 2G/3G/4G
--------	---------------------------

Type 3	ISM169 + 2G/3G/4G
--------	-------------------

Type 4	2G/3G/4G
--------	----------

Typical VSWR	< 2.0:1
--------------	---------

Radiation pattern	Omnidirectional
-------------------	-----------------

Max Input Power	10W
-----------------	-----

Mechanical

Material	Tube: Glass fiber Bracket: Aluminum, Stainless steel Materials able to withstand extreme environmental conditions
----------	-------------------------------------------------------------------------------------------------------------------------

Tube length	Up to 3 meters, can work as a concentrator antenna mast
-------------	---------------------------------------------------------

Diameter	Ø35 mm
----------	--------

Color	Light Grey
-------	------------

Cable type	configurable
------------	--------------

Cable length	Configurable
--------------	--------------

Connector	Configurable
-----------	--------------

Temperature range	-40°C to +85°C
-------------------	----------------

Humidity	≤ 95%
----------	-------

IP class	IP44
----------	------

Mounting	Pole / Wall mounted, single or dual bracket included
----------	------------------------------------------------------

Other

RoHS compliant	
----------------	--

Smarteq reserves the right to change specifications without prior notice.