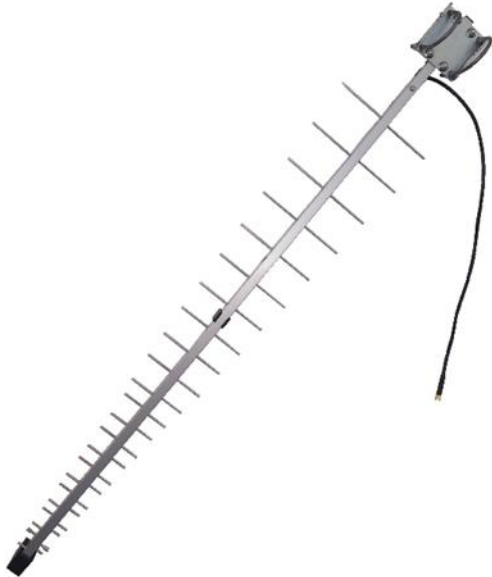


LPA922

Directional Antenna

LPA922 is a broadband antenna with high gain and designed to be used in tough conditions.

- 698-960MHz and 1710-2690MHz
- Easy to install
- Wall or pole mounted



Specifications

Electrical

Frequencies	698-960MHz	
	1710-2690MHz	
Impedance	50Ω	
Polarization	Vertical	
VSWR	< 2.0:1	
Gain	698-790MHz	8dBi
	790-960MHz / 1710-2690MHz	11dBi
Max power	10W	

Mechanical

Dimensions (L x W x H)	1040 x 170 x 40mm
Cable	RG223, black, 0.5m
Connector	SMA(m)
Weight	850g
Material	Aluminum
Installation	On wall or pole (Ø 35-54mm)

MIMO (Multiple-In-Multiple-Out Solution)

The MIMO technology significantly increases data throughput. Smarteq recommends to install two LPA922 antennas to improve communication performance.

Other

This part is RoHS compliant.

Part number

710327

Tested according to standards:

IEC60068-2-1
IEC60068-2-2
IEC60068-2-11
IEC60068-2-14

Smarteq reserves the right to change specifications without prior notice.

SMARTEQ[™]
WIRELESS

Smarteq, based in Stockholm, Sweden, is a leading developer of antennas and antenna systems for increased availability. Smarteq aims towards the market segments industry, energy and vehicles.

smarteq.com info@smarteq.com +46 8 792 92 00

